



White River Connect News Release

Contact:

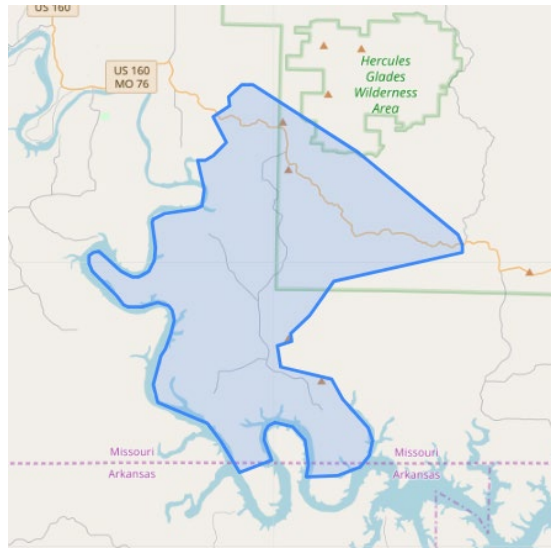
Jamie Dopp, Manager of Marketing and Communications

O: (417) 335-9216, C: (417) 425-8739

jdopp@whiteriver.org

NEWS RELEASE

White River Connect now live in the Cedar Creek and Kisse Mill Areas



Branson, Missouri –White River Connect, a subsidiary of White River Valley Electric Cooperative, is now signing up customers living in the Cedar Creek and Kisse Mill areas.

“For far too long, rural communities have been left behind in the digital age,” said White River Connect CEO Beau Jackson. “White River Connect fiber internet is not only introducing fiber internet to our neighbors in Cedar Creek and Kisse Mills, but opening doors to new opportunities in education, business, and healthcare. We are proud to be doing our part to connect our local communities to reliable internet service.”

Construction began on White River Connect's fiber network in June of 2023. The project, which will provide internet to rural areas of Christian, Douglas, Ozark, Stone, and Taney Counties is expected to take four years to complete and will cover over 4,200 miles of fiber. White River Connect's high-speed internet is currently available in the areas of Branson, Bear Creek, Sweden, Rockaway, Gretna, Goodhope, Gainesville, and Taneyville with plans to open more markets in 2025.

Residents can visit <https://www.whiteriverconnect.com> to view the map of service availability and sign up for service in those areas. People can also pre-register for areas coming soon.

For more information about White River Valley Electric Cooperative's fiber-to-the-home project, White River Connect, visit <https://www.whiteriverconnect.com>.

#

About White River Connect

White River Connect, the fiber subsidiary of [White River Valley Electric Cooperative](#), is dedicated to bringing high-speed internet to rural Missouri counties including Ozark, Taney, Stone, Christian and Douglas

About WRVEC

[White River Valley Electric Cooperative](#) is a [Touchstone Energy Cooperative](#) dedicated to ensuring our members receive safe and reliable service in their homes and businesses across five southwest Missouri counties including Ozark, Taney, Stone, Christian and Douglas.